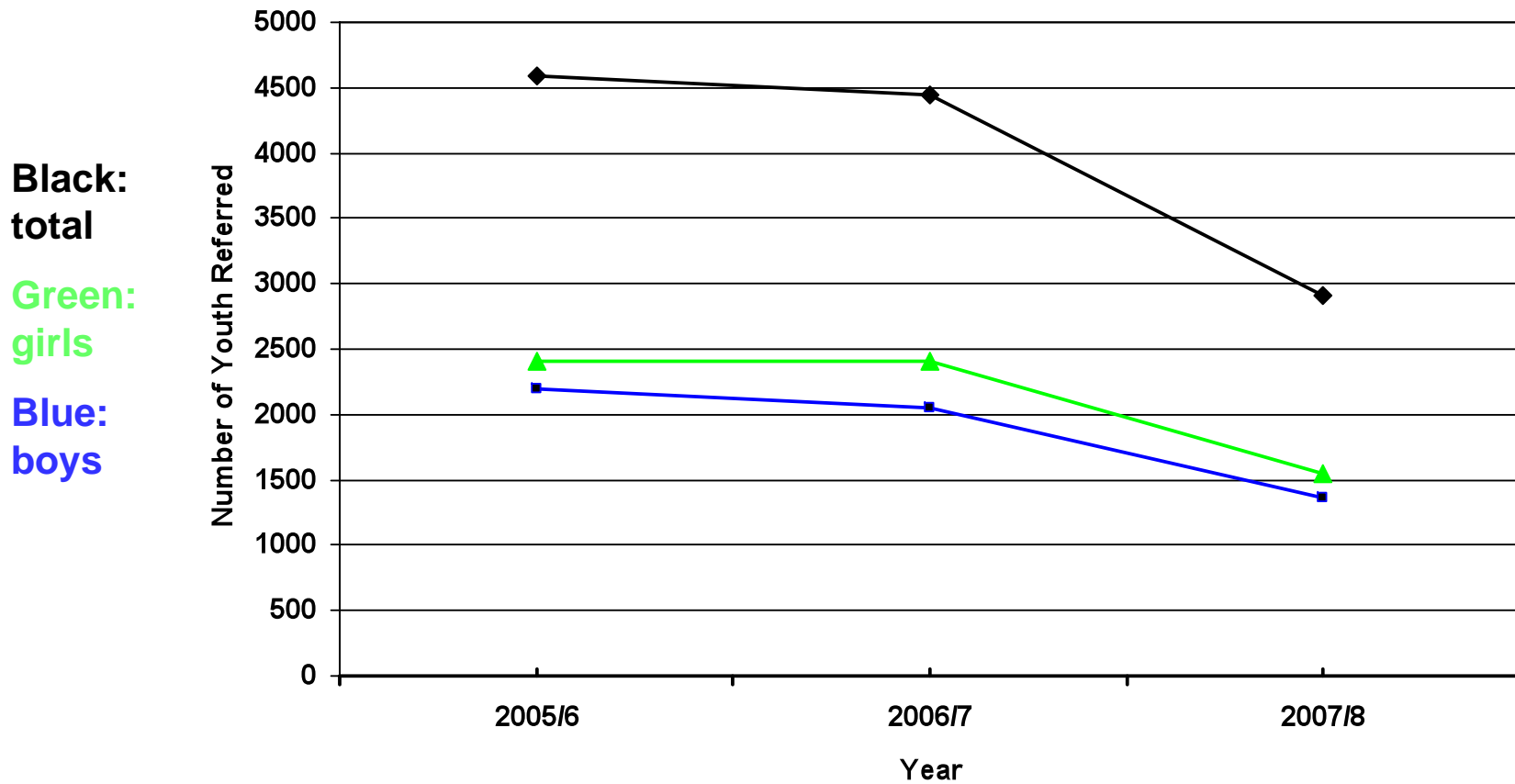


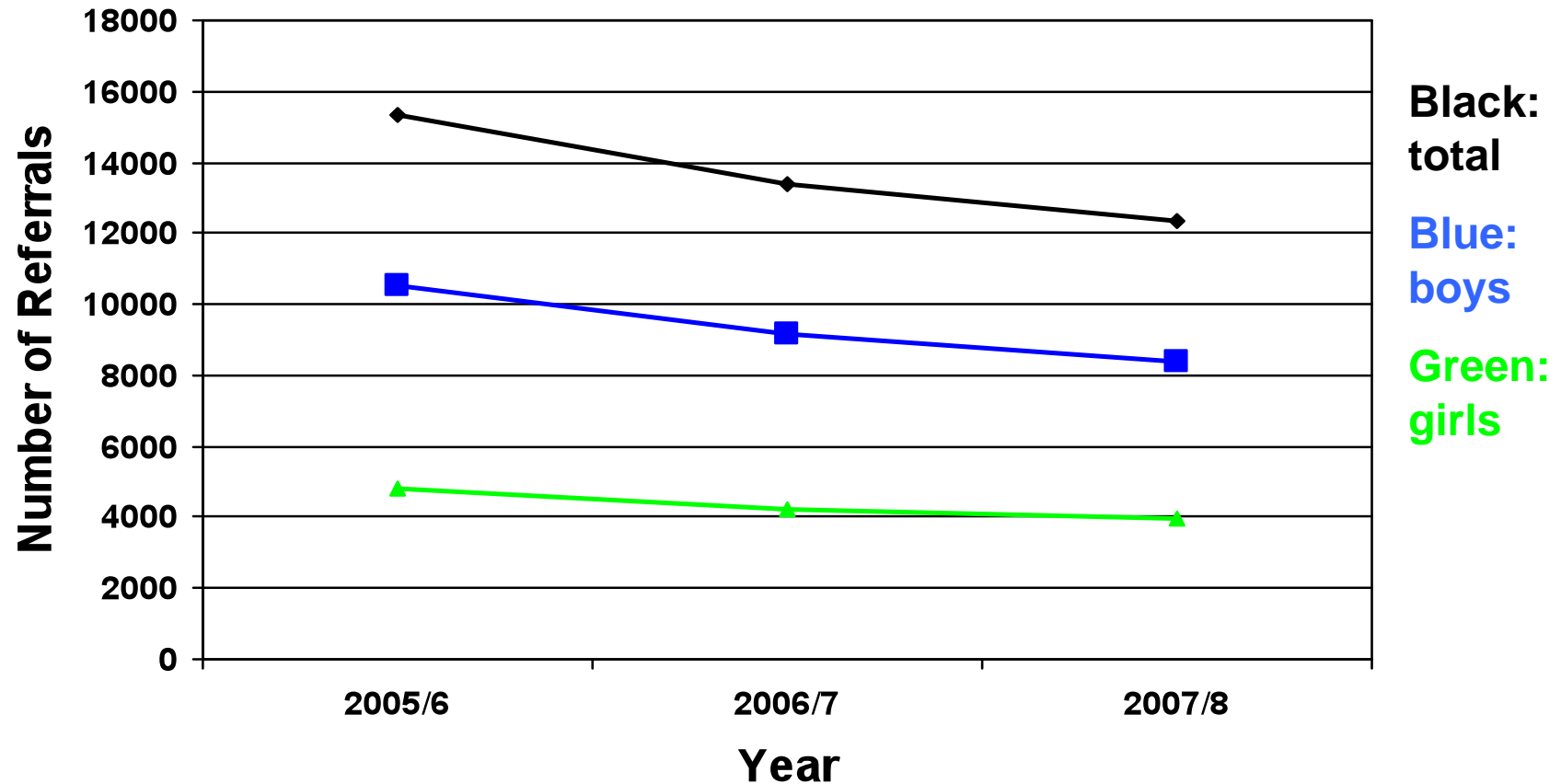
# Total Annual FWSN Referrals by Gender 2005-8



In each of the three years, girls represented just over half of the total referrals (52%, 54%, and 53%, respectively).

Data from Judicial Branch, Court Support Services Division, August 2009

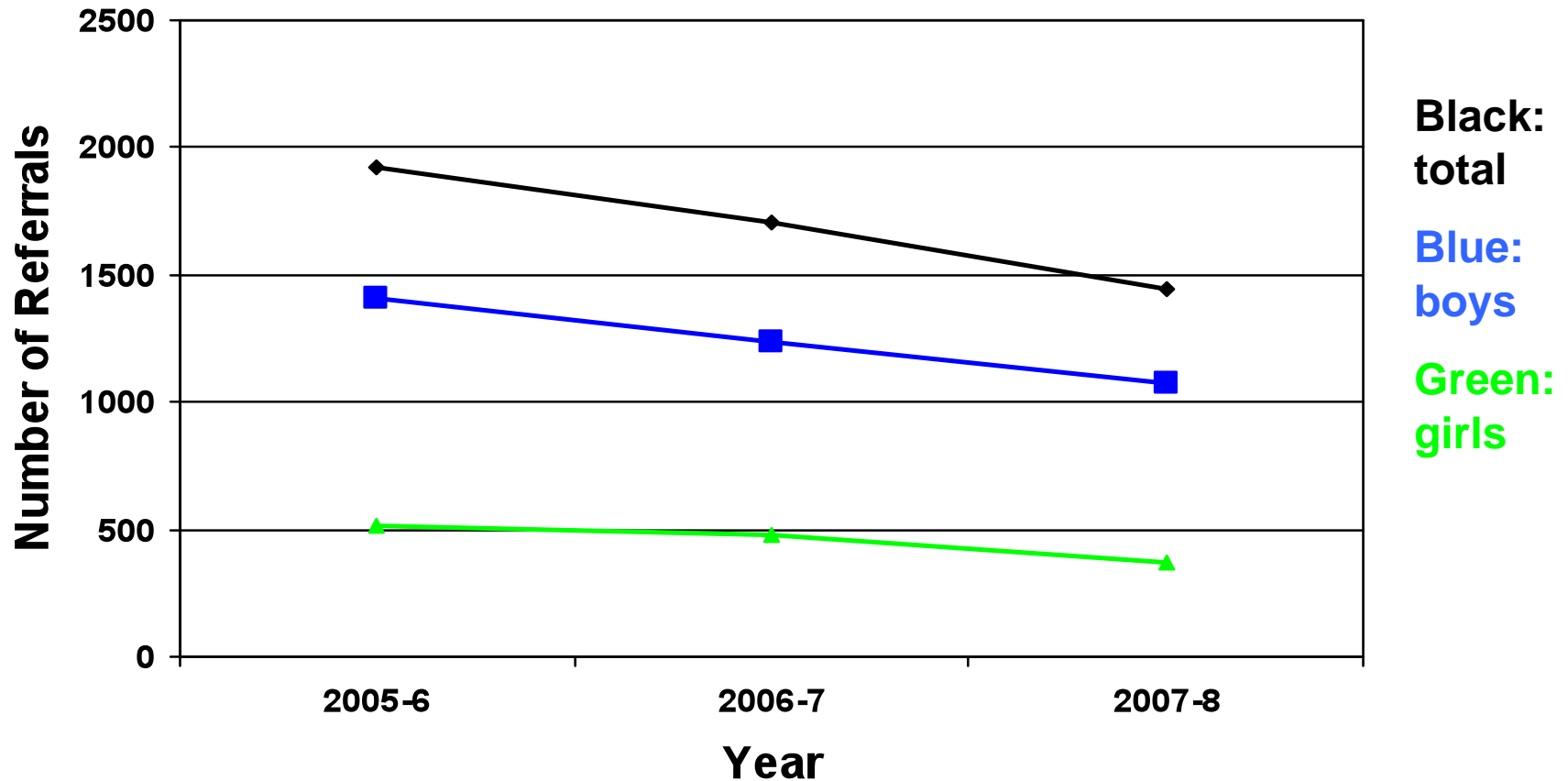
# Total Annual Delinquency Referrals to Court by Gender 2005-8



Girls represent one-third of referrals to court: 31%, 32%, and 32% in each time period.

Data from Judicial Branch, Court Support Services Division, August 2008

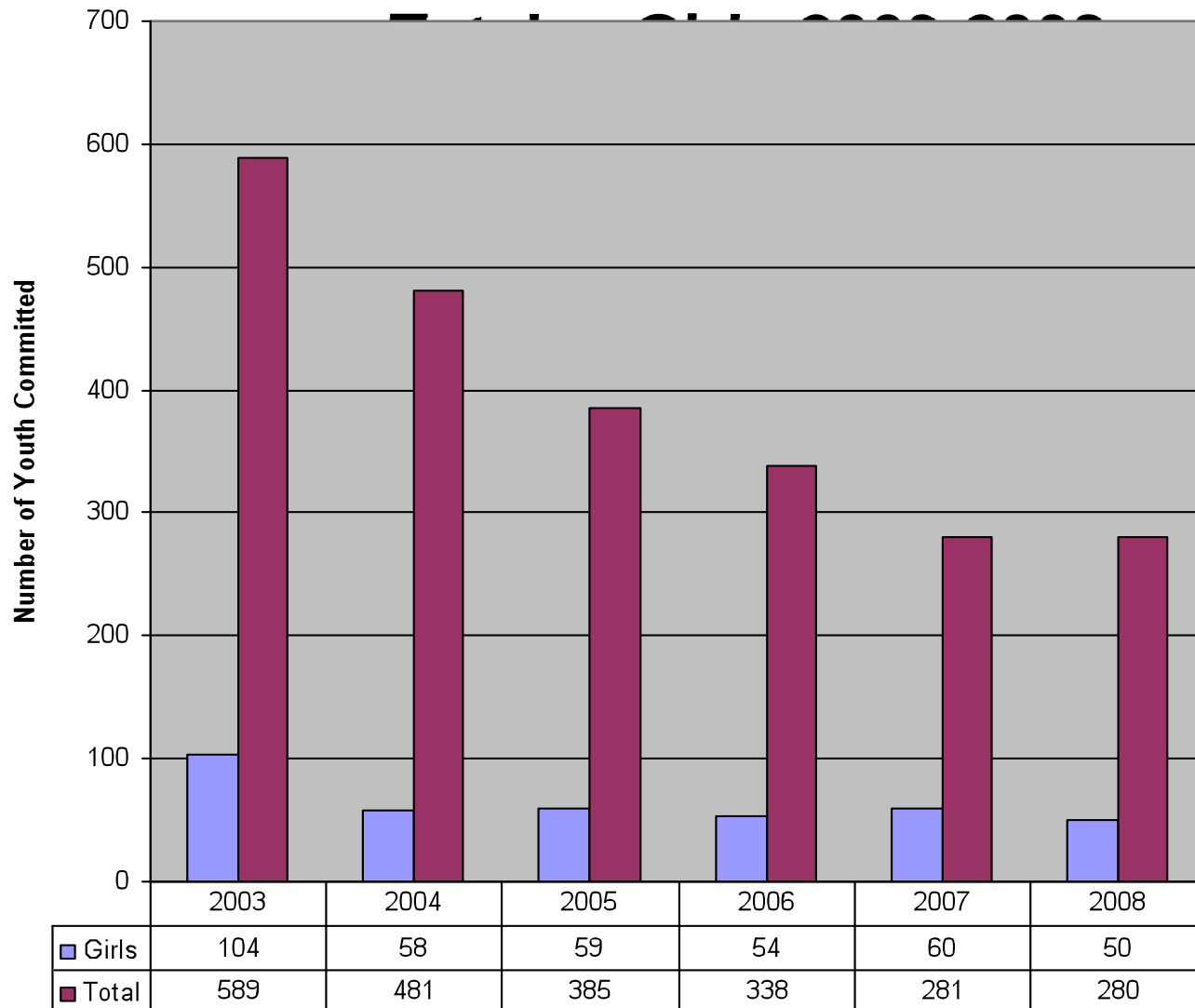
## Total Annual Admissions to Detention by Gender 2005-8



Girls represent just over a quarter of detention admissions in each year (27%, 28%, and 26%, respectively).

Data from Judicial Branch, Court Support Services Division, November 2008

# Juvenile Delinquency Commitments to DCF



The overall number of delinquency commitments to DCF has been shrinking.

As a percentage of this total, girls remained steady at around 20% (over the past six years, between 12 and 21%).

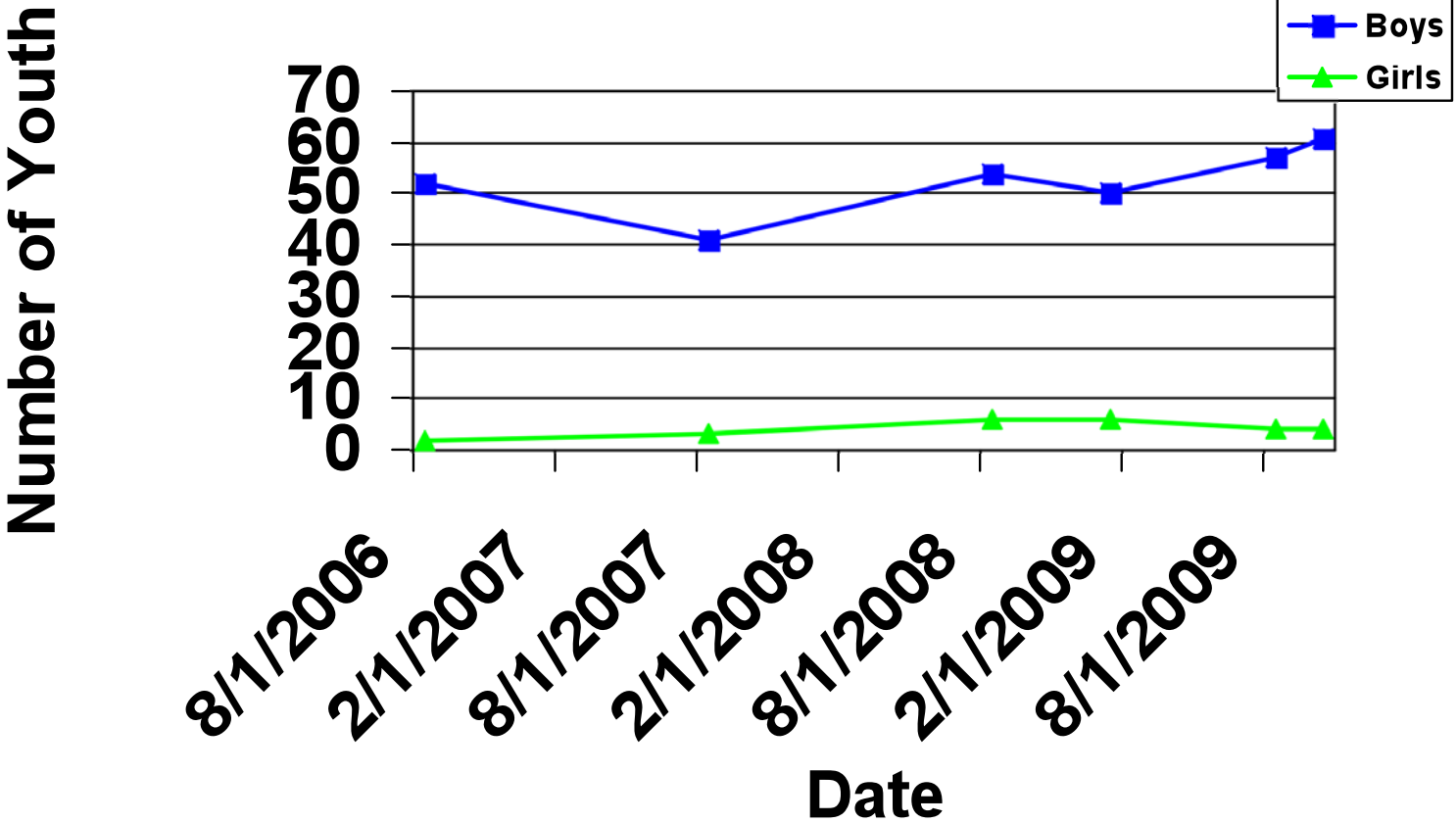
Source: DCF Bureau of Juvenile Services (Girls Data 2003-2008.xls). Data is unique delinquency numbers only, NOT FWSN.

## Top 10 Towns of Residence, Girls Committed Delinquent to DCF 2003-8

<b>County</b>	<b>2003</b>	<b>2004</b>	<b>2005</b>	<b>2006</b>	<b>2007</b>	<b>2008</b>	<b>Total</b>	<b>% of Total</b>
Hartford	18	6	6	8	13	7	58	15.03%
Waterbury	7	5	10	10	6	8	46	11.92%
Bridgeport	13	10	10	2	1	2	38	9.84%
New Britain	9	5	4	4	3	0	25	6.48%
New Haven	2	2	1	3	4	9	21	5.44%
Danbury	2	1	3	3	1	2	12	3.11%
Meriden	2	0	0	4	3	3	12	3.11%
Torrington	1	3	2	1	4	1	12	3.11%
Manchester	8	1	0	1	0	1	11	2.85%
Stamford	2	3	1	1	2	0	9	2.33%

Source: DCF Bureau of Juvenile Services ( DCF Girls Data 2003-2008.xls)

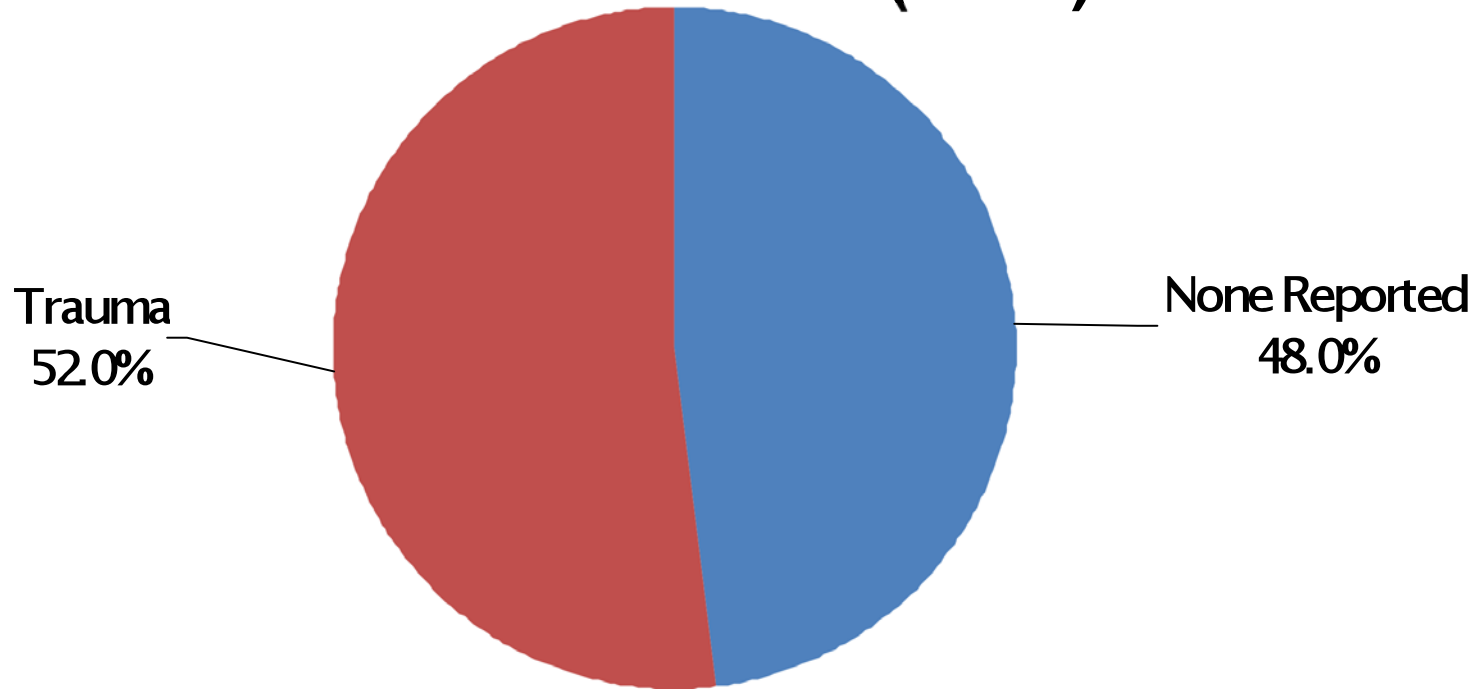
# Point-in-time CT Out-of-State (DCF) Juvenile Justice Residential Placements by Gender



Data from the Connecticut Department of Children and Families Bureau of Juvenile Services, Oct 09.

Placements include group homes, residential treatment, and substance abuse facilities.

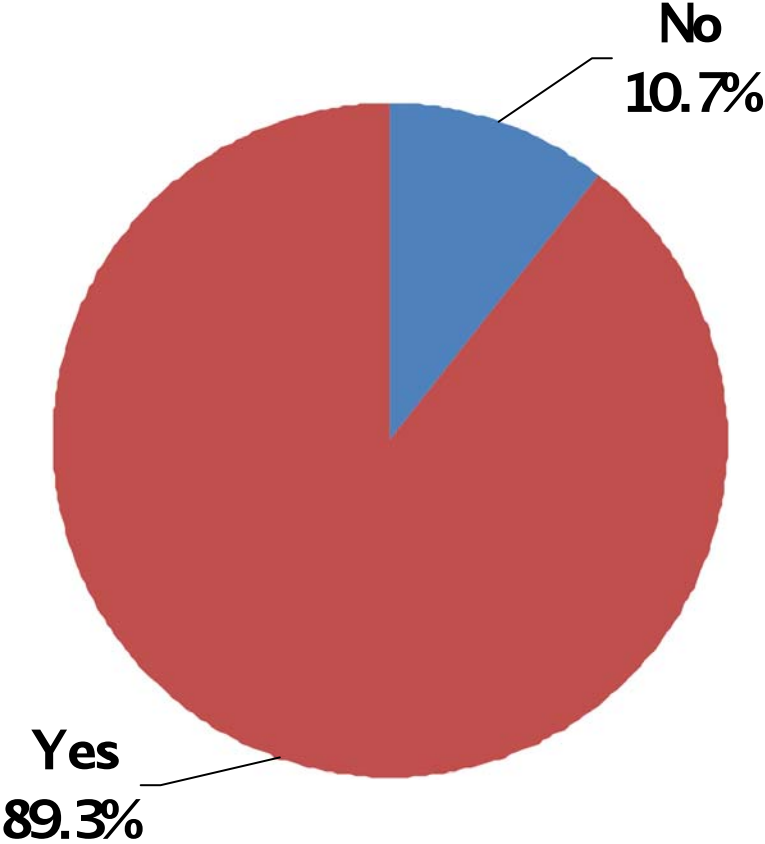
## Percent of DCF / Parole Girls with Diagnosed Trauma Disorders (N=75)



Note: Trauma includes PTSD, sexual, mental or physical abuse and neglect, immediate family incarceration, miscarriage, deceased parent, domestic violence, witness to domestic violence, abandonment, serious car accident, divorce, trauma issues, sexual problems. Veysey (2008) found that girls with severe trauma display alcohol and drug use, panic reactions, anxiety, depression, suicide attempts, conduct disorders, oppositional or defiant behavior, violent behavior against oneself, sleep disturbances, severe obesity, and adolescent pregnancy.

Source: DCF Bureau of Juvenile Services (DCF girlsghinfoin 1-18-09.xls)

# Percentage of DCF / Parole Girls with More Than One Diagnosed Psychological Disorder (N=75)

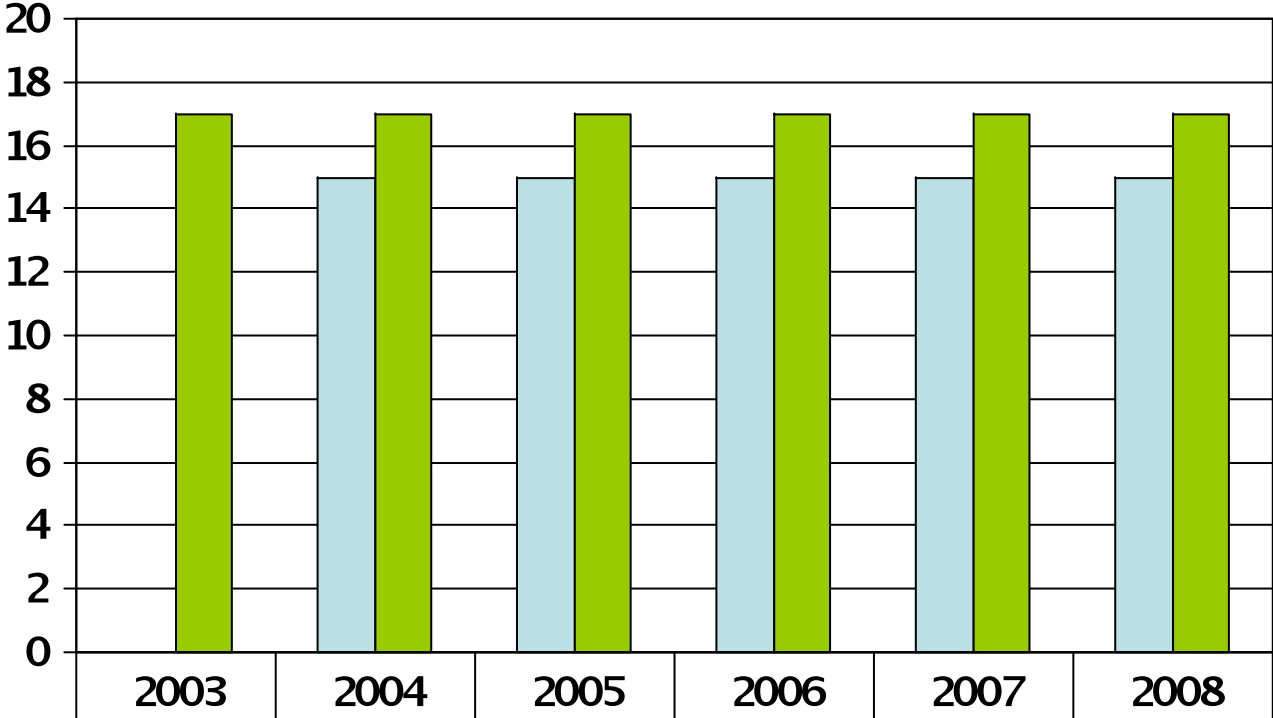


Source: DCF Bureau of Juvenile Services (DCF girlsghinfoin 1-18-09.xls)

Note: When drug-related disorders are included, all girls (100%) have at least 2 diagnosed disorders.



# Average Age of Girls at Delinquency Commitment and Release 2003-2008



<span style="color: lightblue;">■</span> Average Age at Commitment	*	15	15	15	15	15
<span style="color: green;">■</span> Average Age at Release	17	17	17	17	17	17

Source: DCF Bureau of Juvenile Services (DCF Girls Data 2003-2008.xls)

\*Note= No data